

GAS SHIELD

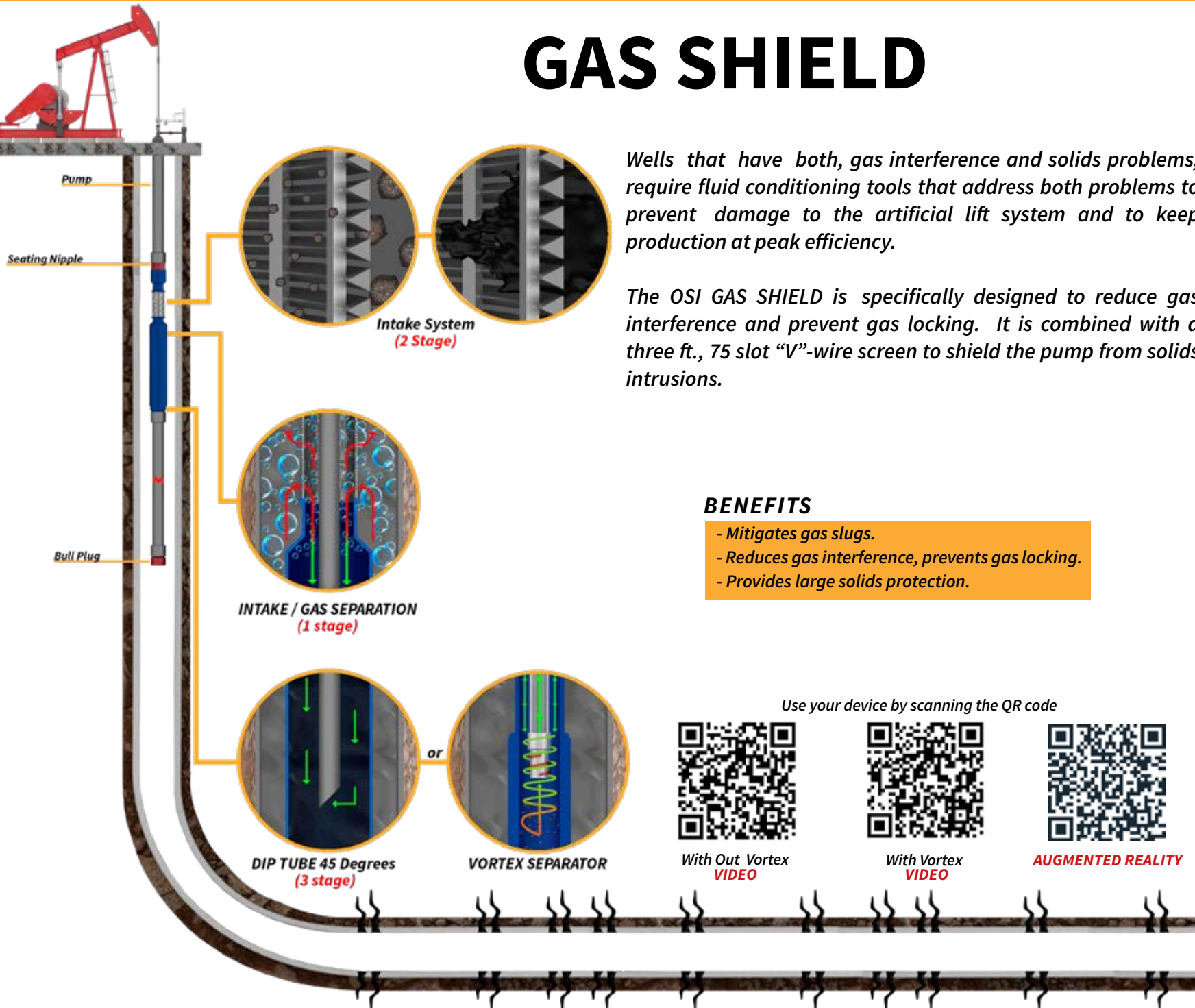
Wells that have both, gas interference and solids problems, require fluid conditioning tools that address both problems to prevent damage to the artificial lift system and to keep production at peak efficiency.

The OSI GAS SHIELD is specifically designed to reduce gas interference and prevent gas locking. It is combined with a three ft., 75 slot "V"-wire screen to shield the pump from solids intrusions.

BENEFITS

- Mitigates gas slugs.
- Reduces gas interference, prevents gas locking.
- Provides large solids protection.

HOW IT WORKS



Use your device by scanning the QR code



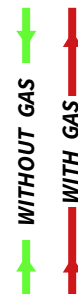
With Out Vortex VIDEO



With Vortex VIDEO



AUGMENTED REALITY





“Your source for fluid conditioning systems”

BENEFITS

- Mitigates the gas slugs.
- Reduces or Eliminates the Gas locking.
- Large solids filtration
- Multiple stages of gas separation.
- Utilizes both, the casing and tubing as gas separators.
- Allows sand & gas separation.

Features

- Highly efficient Gas Separator design.
- New Dual Flow System™ technology, improving the operational time.
- Separate the free gas to the backside.
- Internal helix to separate the solid particles.

Technical Specifications

Sizes	Neck (in)		Body (in)		Collar (in)		Open Area (In ²)
	OD	ID	OD	ID	OD	ID	
2 - 3/8" x 3"	2.375	1.941	3	2.5	3.063	2.375	101
2 - 7/8" x 3 - 1/2"	2.875	2.441	3.5	3	3.668	2.875	121
2 - 7/8" x 4"	2.875	2.441	4	3.5	3.668	2.875	121
2 - 7/8" x 4 - 1/2"	2.875	2.441	4.5	4	3.668	2.875	121
3 - 1/2" x 4 - 1/2"	3.5	3.066	4.5	4	4.5	3.5	141
3 - 1/2" x 5 - 1/2"	3.5	3.066	5.5	5	4.5	3.5	141

*The tool capacity is function of the well conditions: pump parameters, perforations zone, well inclination, gas volume, so on. To get an optimal design fill up the OSI's data sheet. Longer assemblies provide larger capacities.

For productions higher than flow chart please use multiple screens assemblies or contact 432-580-7111 for more technical assistance.

Collar OD

Neck OD

Body OD

